

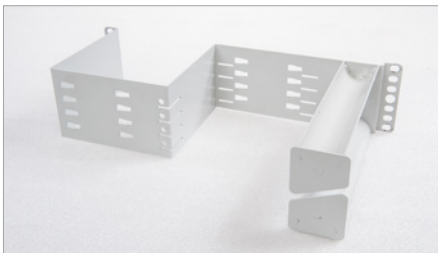
OCSH

Shelf for OCM6 Optical Component Modules

The OCSH is a mechanical shelf assembly that accommodates OCM6 splitter or xWDM modules in a rack or cabinet environment. The shelf is typically used in 15-inch, ETSI or 19-inch active racks or data racks, and is also compatible with CommScope racks and cabinets using the FIST fiber management system.

OCSH-R Features

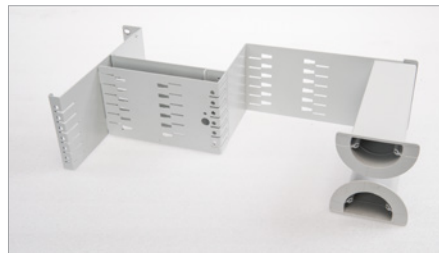
- Can be back mounted in the rack or cabinet
- Occupies 2 height units (15-inch standard)
- Allows the storage of up to 8 modules
- Front access to the modules
- Pigtails can enter the shelf at the left or right when the shelf is turned upside down
- 20mm bend radius protection



OCSH-R

OCSH-I Features

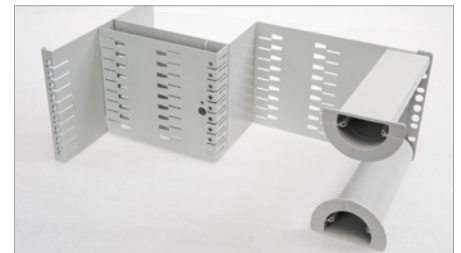
- Can be back mounted in the rack
- Occupies 3 height units (19-inch standard)
- Allows the storage of 12 modules
- Front access to the modules
- Pigtails enter and leave the shelf via the left or right when the shelf is turned upside down
- 30mm bend radius protection



OCSH-I

OCSH-L Features

- Can be back mounted in the rack or cabinet
- Occupies 4 height units (19-inch standard)
- Allows the storage of up to 18 modules
- Front access to the modules
- Pigtails can enter the shelf at the left or right when the shelf is turned upside down
- 30mm bend radius protection



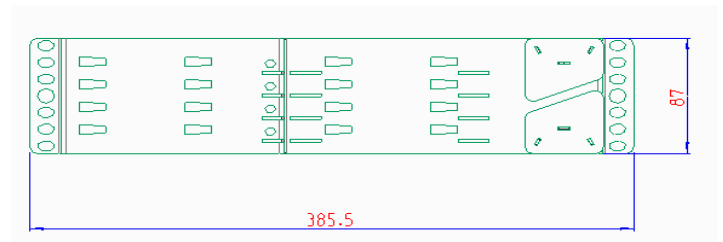
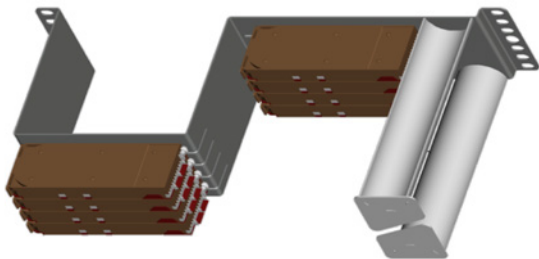
OCSH-L

Ordering Information

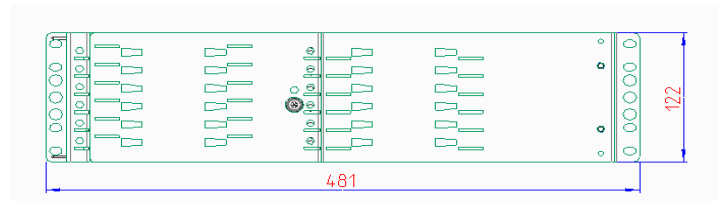
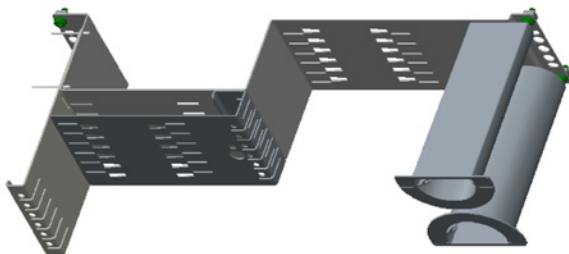
Shelves

| Description | Dimensions in mm (H x W x D) | OCM6 module capacity | Part Number |
|----------------|------------------------------|----------------------|-------------|
| 15", 2RU shelf | 87 x 385 x 242 | 8 | OCSH-R |
| 19", 3RU shelf | 122 x 481 x 242 | 12 | OCSH-I |
| 19", 4RU shelf | 173 x 481 x 242 | 18 | OCSH-L |

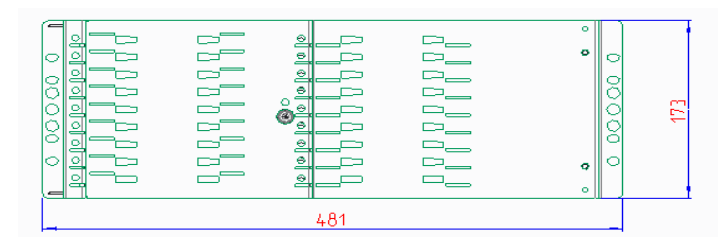
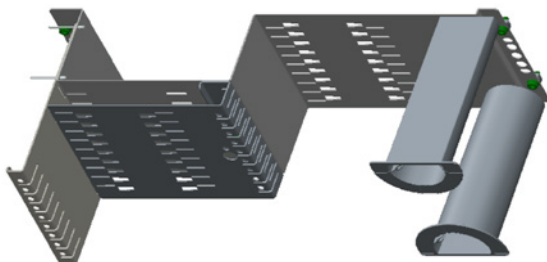
OCSH-R: 15"



OCSH-I: 19"



OCSH-L: 19"



Ordering Information

Accessories

| Description | Used with shelf | Ordering number |
|---|------------------------|---------------------|
| <i>Mounting brackets</i> | | |
| Convert 2RU, 15" to 19"/ETSI mounting | OCSH-R | FIST-ODF-MB-R/1M-AS |
| Convert 3RU, 19" mounting to ETSI mounting | OCSH-I | FIST-MB-M |
| Convert 4RU, 19" mounting to ETSI mounting | OCSH-L | FIST-MB-M |
| Repair kit: facility for repairing damaged pigtails | OCSH-R, OCSH-I, OCSH-L | OCSH-SPLICE-KIT |

If you require information on mounting OCM5 splitter modules (rather than OCM6 modules) in the OCSH, please contact your local sales representative.



www.commscope.com

Visit our website or contact your local CommScope representative for more information.

© 2015 CommScope, Inc. All rights reserved.

FIST and all trademarks identified by ® or ™ are registered trademarks or trademarks, respectively, of CommScope, Inc. This document is for planning purposes only and is not intended to modify or supplement any specifications or warranties relating to CommScope products or services.

PS-318768.3-EU (12/15)